

Data Sheet

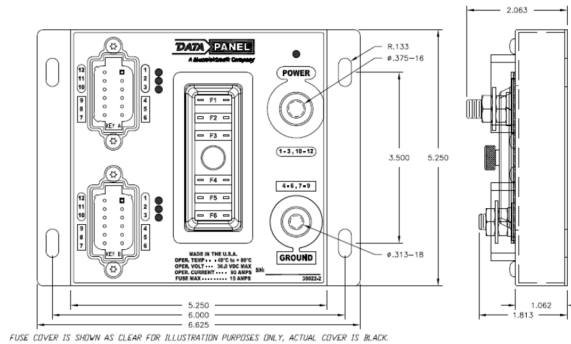
DP-38022-2

PSF-2

**Power Splitter &
Distribution Device
with Fuses**

2 Connector

**8-36 Vdc
IP67**



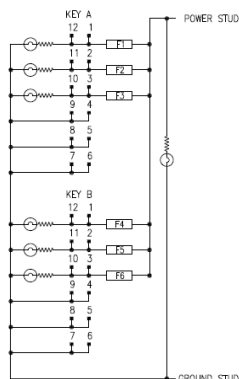
Technical Data

Housing	Aluminum, black anodized
Cover	ABS, black, velvet matte with gasket
Dimensions (l x w x h)	6.625 x 5.25 x 2.063 inch
Weight	1.76 lbs (0.80 kg)
Installation	Screw connection 4 x 1/4" (not included) Cover thumb screw/captive washer 8-32 (included) 15 Amp fuse Max. (fuses not included)
Torque Specification	Power Stud (3/8-16): dry torque 154 in-lbs. Ground Stud (5/16-18): dry torque 86 in-lbs. Thumb Screw: dry torque 13 in-lbs.
Mating Connectors and Accessories	
Deutsch® Key A connector	DT06-12SA
Deutsch® Key B connector	DT06-12SB
Deutsch® size 20 Socket	0462-201-20141
Deutsch® size 16 Socket	0462-201-16141
Deutsch® Wedgelock	W12S
Deutsch® Seal Plug	114017
Fuses	Automotive Blade Type (ATO/ATC)
Mating Connector Kit - Includes mating Deutsch® Key A (Gray) and Deutsch® Key B (Black) connectors, wedgelocks, 16 GA sockets, and seal plugs	DP-38022-400
Operating Voltage	8-36 V DC
Input Current	90A max.
Output Current	13.5A continuous per pin max.
Total Inputs	2 – 1 Main Power 3/8" Stud 1 Main Ground 5/16" Stud
Total Outputs	2 - 12 Pin Connectors (6 power and 6 ground each)
Operating Temperature	-40...80 °C
Storage Temperature	-40...80 °C
IP67	User to protect input stud(s) Connector seal plugs required for unused pins

					Date	Name	<div>Data Sheet</div> <div>PSF-2</div> <div>Power Splitter & Distribution Device</div> <div>2 Connector</div>		
				Originator	01.30.20	FSa			
				Approved	01.30.20	FSa			
c	DCN F263	09.04.20	FSa	<div><div>DATA</div><div>PANEL</div></div> <div>A Murrelektronik Company</div>					
b	DCN F226	03.16.20	FSa				<div>Art. No.: DP-38022-2</div>		<div>Sheet</div> <div>1 of 2</div>
Rev	Description	Date	Name						
a	DCN F175	02.03.20	FSa						

Operating States (LEDs)	Color	Status
POWER LED		Illuminated on POWER and GROUND present
Output LED		One per Fuse, Illuminated on fuse good

Connector Wire Diagram




Notes:

1. All power to vehicle must be turned off prior installation of the device.
2. The device should only be installed by a trained electrician following standard best practices
3. To maintain IP rating, sealing plugs need to be installed on all unpopulated positions on mating connectors.
4. To maintain IP rating, fuse cover needs to have gasket present and thumb nut manually tightened to dry torque 13 in-lbs. to maintain seal. Over tightening of fuse cover could result in cracking of the fuse cover and a degradation in the IP rating.
5. Fuses are rated at 15 Amp maximum for each fuse location (6 total).
6. Output LED's require an intact fuse or circuit breaker, open circuits yield un-lighted LED

Test Standards and Regulation

Climatic test	Cold Temperature to IEC 60068-2-1:2007, test Ad Dry Heat to IEC 60068-2-2:2007, test Bb Temperature Durability to IEC 60068-2-14:2000-08, test Nb Temperature Shock to IEC 60068-2-14:2000-08, test Na Humidity Soak to IEC 60068-2-78:2001, test Cab Humidity Cycle to IEC 60068-2-30:2005, test Db
Mechanical test	Swept Sine Vibration to IEC 60068-2-6:2007, test Fc Random Vibration to IEC 60068-2-64:2008, test Fh Resonance Vibration to IEC 60068-2-6:2007, Section 8.1 Mechanical Shock to EN 60068-2-27:2008, test Ea Mechanical Bump to EN 60068-2-27:2008, test Ec IP protection to EN 60529:2000-09, test IP67
Electrical test	Max. Temp and Max. Current to JDQ 53.3, Section 9



					Date	Name	Data Sheet	
				Originator	01.30.20	FSa		
				Approved	01.30.20	FSa		
c	DCN F263	09.04.20	FSa	 A Murrelektronik Company			PSF-2 Power Splitter & Distribution Device 2 Connector	
b	DCN F226	03.16.20	FSa					
Rev	Description	Date	Name					
a	DCN F175	02.03.20	FSa					
				DP-38022-2 db e c.docx			Art. No.: DP-38022-2	
							Sheet 2 of 2	