

DATA SHEET

DP-29004-2

Switch Panel

6 Position

CANBUS

mcdpx™

Mounting Hardware Included

This versatile switch panel has a small footprint and large buttons. Its switches have a long life and are sealed against spray. It is low-profile, has a rugged steel enclosure, and uses CAN2B J1939 structure, communicating with and providing HMI for typical J1939 CAN BUS systems.

Connector Pinout

Connector	Function	Type of I/O
J1-1	CAN High	Communication
J1-2	CAN Low	Communication
J1-3	Ground	Ground
J2-1	Ignition ON/ OFF	+12 Volts @ 1 Amp Max
J2-2	Ground	Ground

Operating States (LEDs)	Color	Status
PWR	Blue	Power to switch panel
COM	Green	Communication status
FLT	Red	Board fault

Buttons

Buttons and their labels are customizable. The number and positions of the LEDs are according to customer requirements, and colors come in white, red, green, blue, and amber. Text on the button labels is white, uppercase, 8 pt Arial font.



Mechanical Data

Housing	Bent steel
Front plate	.062" aluminum black anodized
Graphic	Black gloss polycarbonate
Dimensions (l x w x h)	4.92 x 2.38 x 0.76 in. (124.96 x 60.45 x 19.30 mm)
Weight	0.44 lbs (200 g)
Installation	Flush or bracket

Technical Data

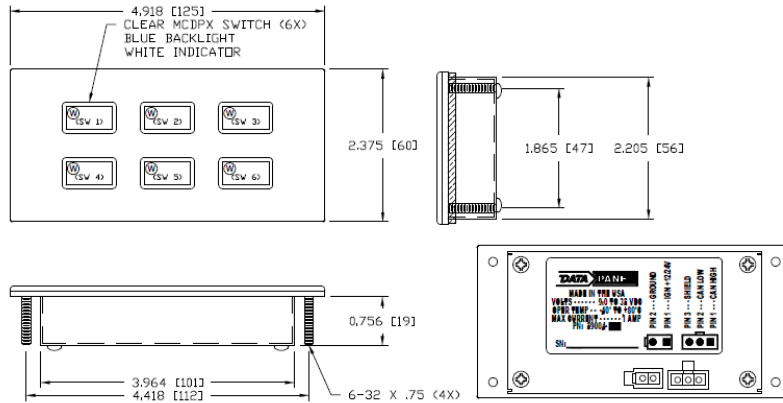
Connections: Connectors	MFG (DP): 3 pin Molex 39-29-6068 (105-7603-1X102) 2 pin Molex 39-29-6028 (105-7601-1X102)
Mating Connectors	3 pin Molex 39-01-4030 (104-0351-001) 2 pin Molex 39-01-3028 (104-0151-001)
Terminals	Molex 39-00-0186 (114-046)
Operating Voltage	9-16.5 Vdc
Switching Current	Signal
Total Module Current	1 A
Operating Temperature	-40...80 °C
Storage Temperature	-40...85 °C
Ingress Protection	IP65
Switches	1 million cycles

Test Standards and Regulation

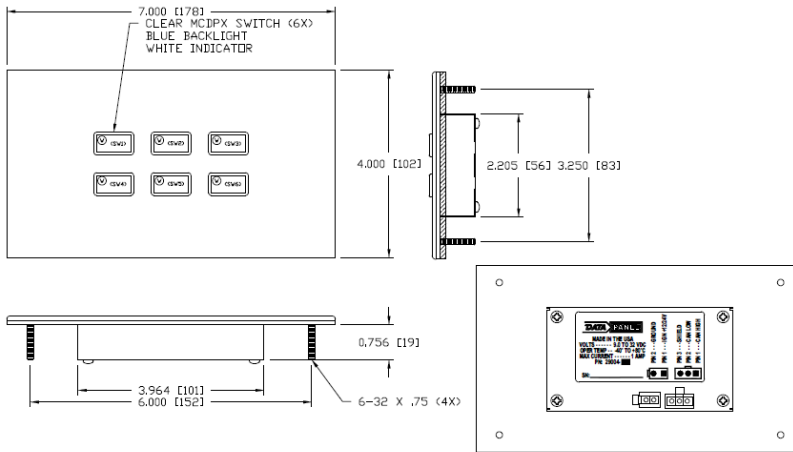
Climatic test	Storage Temperature to IEC 60068-2-1, Test Ad, IEC 60068-2-2, Test Bb Temperature Durability to IEC 60068-2-14, Test Nb
Mechanical test	Drop Test—With Shipping Container to IEC 60068-2-31, Test Ec
Electrical test	Electrical Tests to ISO 16750-2:2003 Vehicle Start Cycle—Brown Out to DP DSGN-3012 Power Cycle Tests Power Decay—Battery Drain to DP DSGN-3012 Power Cycle Tests

				12 Month Warranty		Page	1 of 2
				DATA PANEL		Date	Name
				A Murrelektronik Company	Originator	06.12.20	TMc
Rev	Description	Date	Name		Approved	06.17.20	FSa
a	Initial release - DCN F314	06.19.20	FSa	DP-29004-2_db_e_a.docx	The trademark DEUTSCH is owned by the TE Connectivity Ltd. family of companies.		

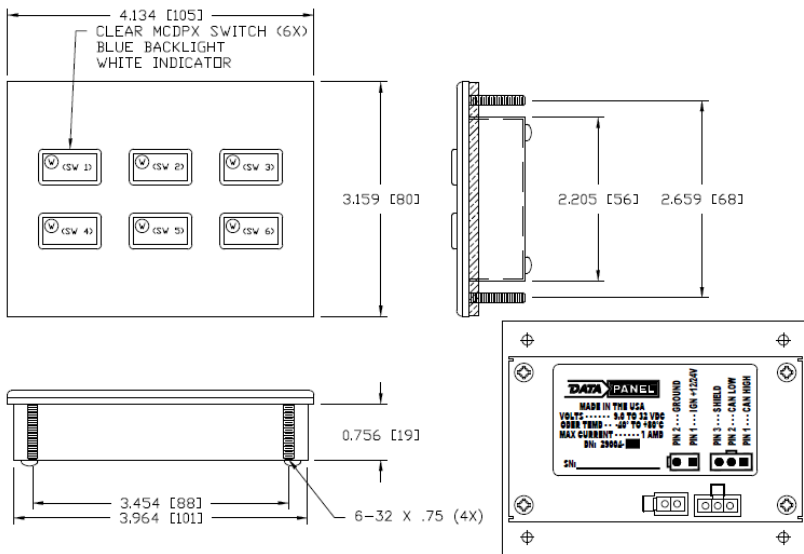
DATA SHEET



29004-2



29004-3



29004-4

CAN Control and Operation Message Summary

Description	Function	PGN	SA
Switch State Message	Switches	65350 (0xFF46)	60
LED Indicator	Indicators	65351 (0xFF47)	n/a

Diagnostics and Status Message Summary

Description	Function	PGN	SA
Diagnostics and Status	Status	65384 (0xFF44)	209

P/N Matrix

Part No.	Description
29004-1	Customer-specific switch labels installed
29004-2	2x3 <i>mcdpx</i> ™, wide, flush mount
29004-3	2x3 <i>mcdpx</i> ™, double din, flush mount
29004-4	2x3 <i>mcdpx</i> ™, tall, flush mount
29004-5	2x3 <i>mcdpx</i> ™, wide, bracket mount
29004-6	2x3 <i>mcdpx</i> ™, wide, flush mount with DEUTSCH pigtail
29004-X	Custom Requirements

				12 Month Warranty	Page	2 of 2
				DATA PANEL	Date	Name
				A Murrelektronik Company	Originator	06.12.20
Rev	Description	Date	Name		Approved	06.17.20
a	Initial release - DCN F314	06.19.20	FSa	DP-29004-2_db_e_a.docx		The trademark DEUTSCH is owned by the TE Connectivity Ltd. family of companies.